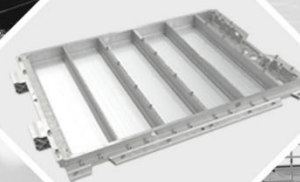




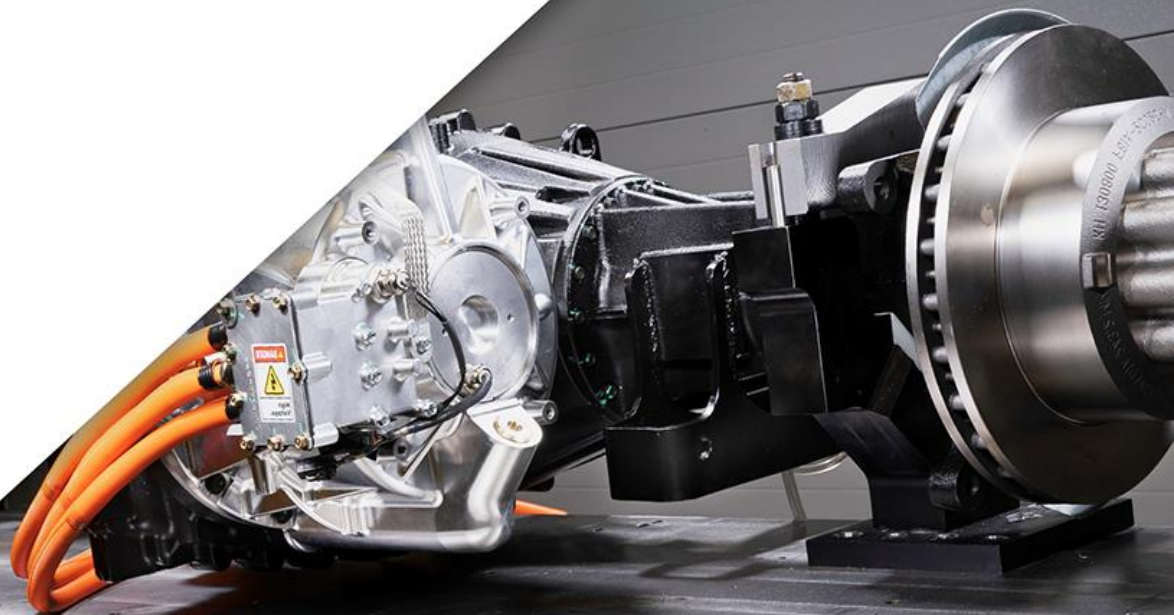
Auto Mayor Conference May 2025



Forward Looking Information, Risk and Uncertainties

Certain information regarding Linamar set forth in this presentation and oral summary, including management's assessment of the Company's future plans and operations may constitute forward-looking statements. This information is based on current expectations that are subject to significant risks and uncertainties that are difficult to predict. Actual results may differ materially from these anticipated in the forward-looking statements due to factors such as customer demand and timing of buying decisions, product mix, competitive products and pricing pressure. In addition, uncertainties and difficulties in domestic and foreign financial markets and economies could adversely affect demand from customers. These factors, as well as general economic and political conditions and public health threats, may in turn have a material adverse effect on the Company's financial results. Please also refer to Linamar's most current Management's Discussion and Analysis of Financial Condition and Results of Operations ("MD&A") and Annual Information Form ("AIF"), as replaced or updated by any of Linamar's subsequent regulatory filings, which set out the cautionary disclaimers, including the risk factors that could cause actual events to differ materially from these indicated by such forward looking statements. These documents are available at <https://www.linamar.com/investors>. The Company assumes no obligation to update the forward-looking statements, or to update the reasons why actual results could differ from those reflected in the forward-looking statements. Content is protected by copyright and may not be reproduced or repurposed without express written consent by the Company.

Company Overview



Leading Edge AI
Enabled Technology

**INNOVATIVE
SOLUTIONS FOR OUR
CUSTOMERS**

Deep
Manufacturing
Expertise

Mobility

Carbon Efficient
Electrified
Lightweight
Connected & Autonomous
New Mobility

Infrastructure

Safe & Efficient Man & Work
to Height

Agriculture

Optimized Harvest Yield
& Availability of Food

Linamar MedTech

Design & manufacture
innovative, reliable, and cost-
efficient medical products

\$10 Billion
Sales

75 Plants

17 R&D
Centres

19 Countries

33,000
Employees

powering
vehicles,
motion, work
and lives for
the future

Diverse Core Capabilities

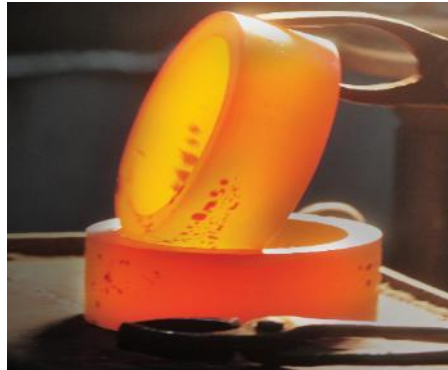
Metal Forming

- Robotic Welding
- Laser cutting
- Metal Forming
- Stamping
- Painting
- Assembly



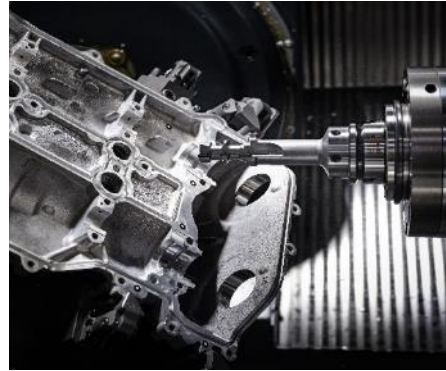
Forging

- Hatebur High Speed Hot
- Horizontal Forging
- Conventional Vertical
- Forging
- Cold Forming
- Ring Rolling
- Radial Forging



Machining & Assembly

- Advanced Automation
- & Robotics
- CNC Expertise
- Complex Assemblies
- Hydroforming
- Heat Treatment

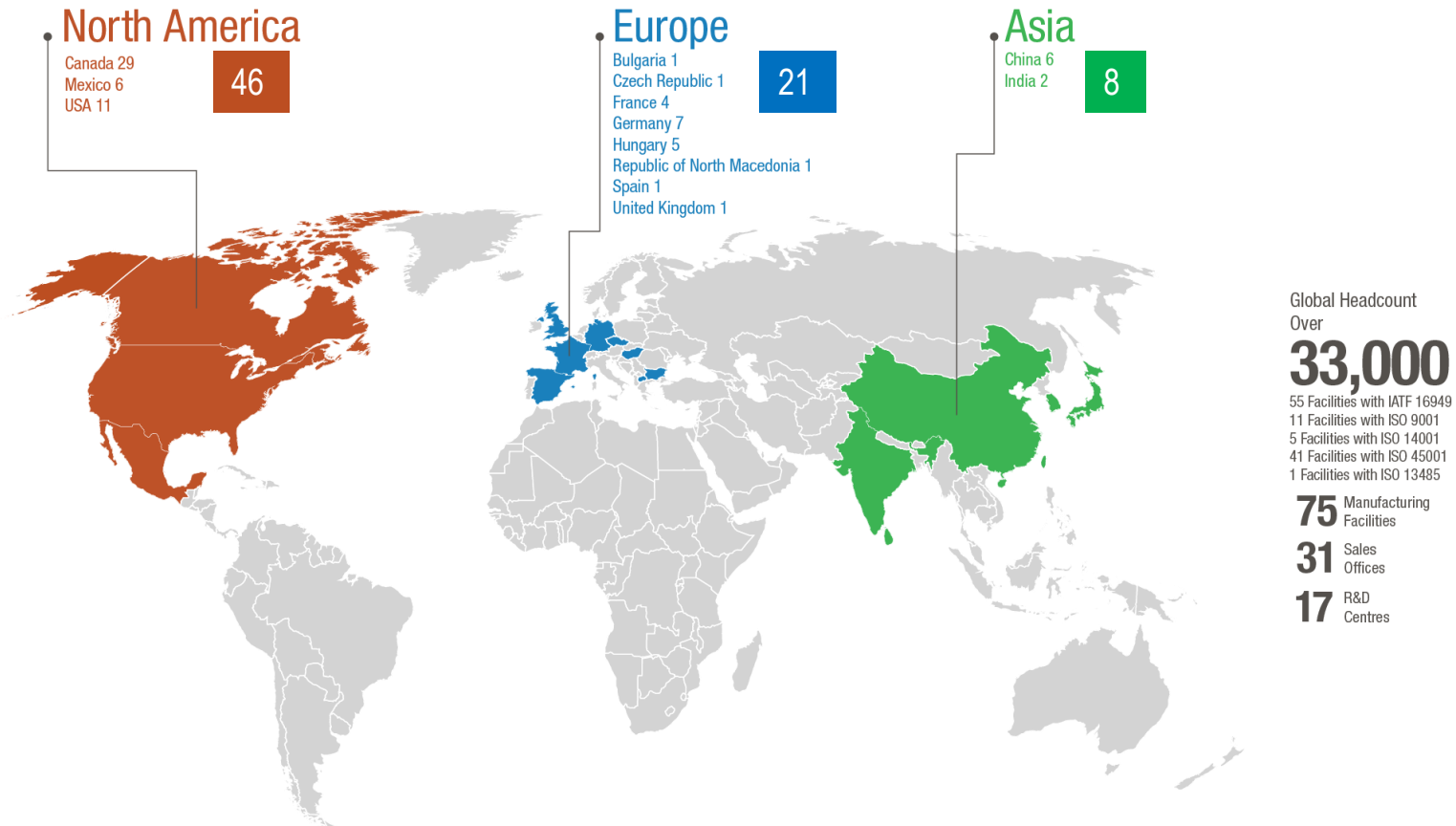


Light Metal Casting

- Gravity Aluminum Die
- Casting
- Low-Pressure Aluminum
- Die Casting
- High Pressure Aluminum &
- Magnesium Die Casting



Global Footprint



Market Concentration Balance



Industrial

Mobile Industrial Equipment | Fabricated Assemblies



Mobility

Propulsion Systems | Structures & Chassis | Advanced Driveline Engine



Mobility Products Portfolio

Driveline



Disconnect Systems



PTUs/RDUs



eAxe Systems 3-in-1

Powertrain



Gearsets



Axle Assemblies



Differential Assemblies

Engine



Camshafts & Carrier Modules



Balance Shaft Module

Structure & Chassis



Battery Enclosures



Suspension



Shock Tower

Energy Storage



Carbon Fibre Hydrogen Fuel Tank



Auxiliary Battery Pack Module

Skyjack Products

Vertical Mast Lifts

Vertical mast lifts with platform heights from 12' (3.6m) up to 20' (5.9m)



DC Scissor Lifts

DC and micro scissor lifts with platform heights from 13' (3.9m) to 40' (12m)



BUY CANADIAN

RT Scissor Lifts

Rough terrain scissor lifts with platform heights from 26' (7.92m) to 64' (19.5m)



Telescopic Booms

Telescopic booms with platform heights from 40' (12.3m) to 86' (26.2m)



Articulating Booms

Articulating booms with platform heights from 30' (9.0m) to 85' (25.9m)



Telehandlers

TH Series telehandlers with lifting capacities from 5,500 lbs (2,494 kg) up to 12,000 lbs (5,443 kg) and a ZB model with a lifting capacity of 20,000 lbs (9,071 kg)



MacDon Products – Harvesting

D & FD Series



C Series Corn Headers



M1 Series Windrower



Pick-Up Headers



R1 Series Pull-Type



R2 Series Rotary Disc Header



Salford Products – Tillage and Crop Nutrition

TILLAGE

INDEPENDENT SERIES



5200 ENFORCER



HALO



FIELD CULTIVATORS



AerWay



APPLICATION



SPINNER SPREADERS



AIR BOOM APPLICATORS



GRANULAR APPLICATORS



CHASSIS/TRUCK MOUNT
SPINNER SPREADERS



CHASSIS MOUNT AIR
BOOM APPLICATORS

Bourgault Products -- Seeding



ADVANCED SEEDING SYSTEMS

AIR CARTS



HOE DRILL SEEDERS



COULTER DRILL SEEDERS



FRAME MOUNTER SEEDERS



Highline FEED HANDLING & PROCESSING

BALE STACKERS



BALE PROCESSORS



ROCK REMOVAL / PICKER

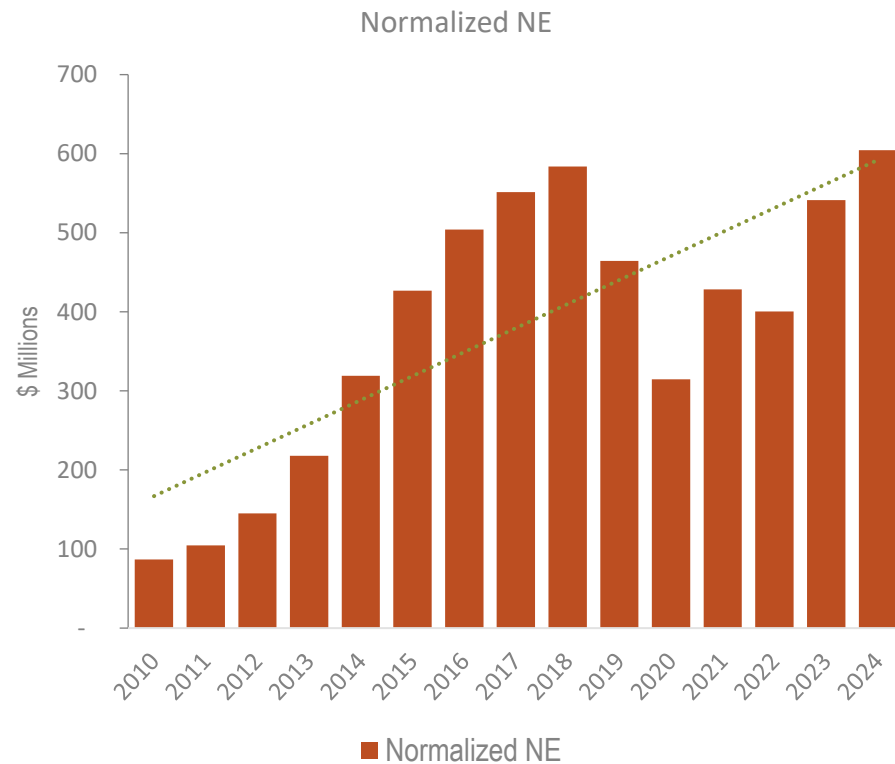
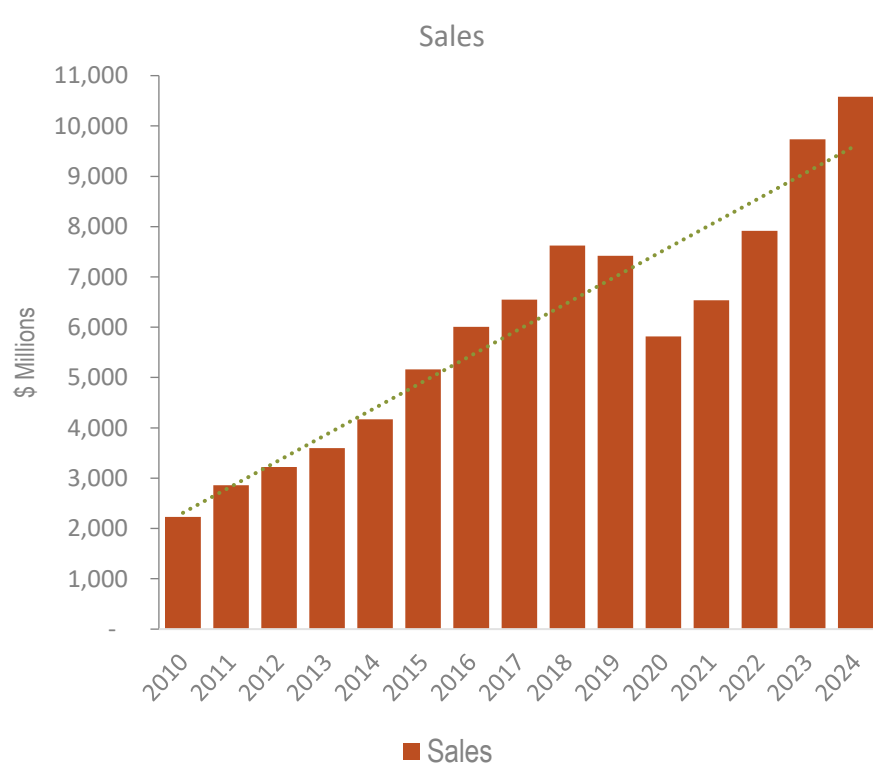


FEED MIXERS

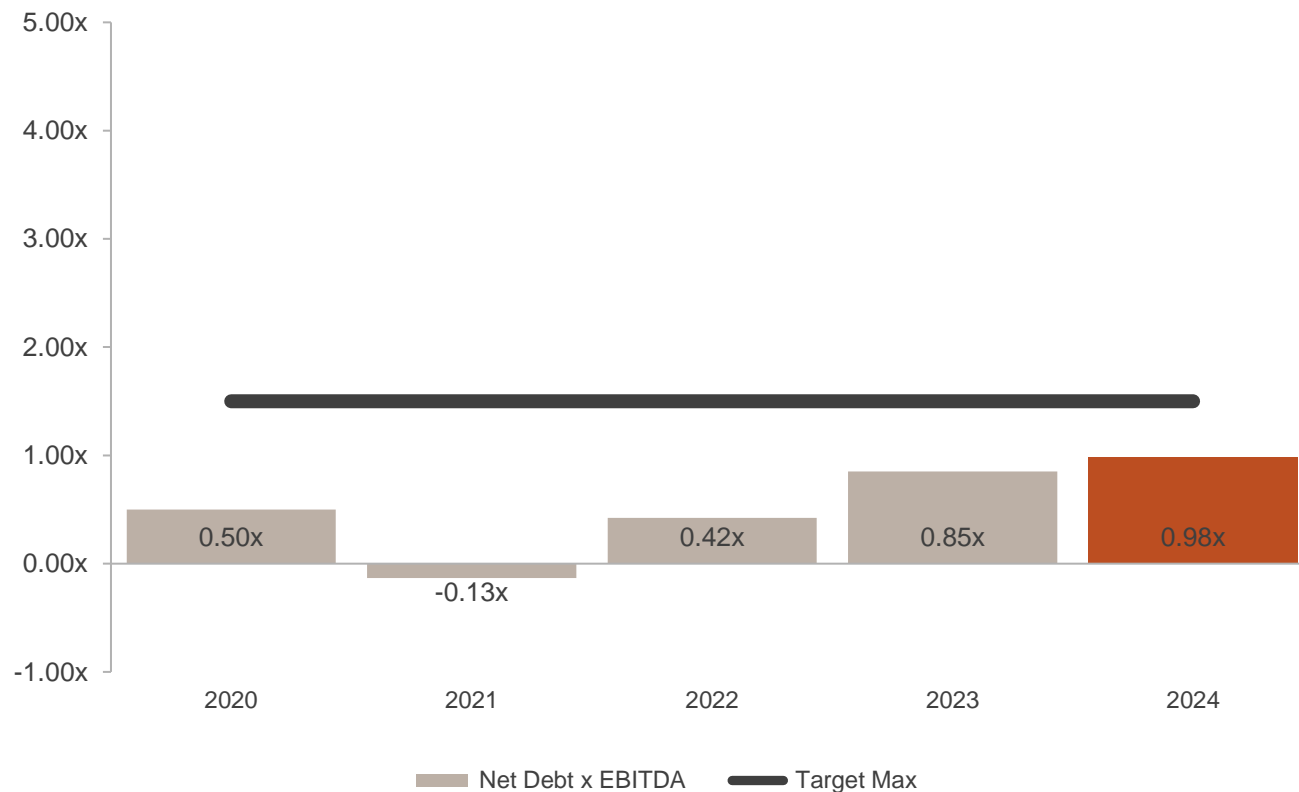


Financial Highlights

Income Statement (in millions CAD)



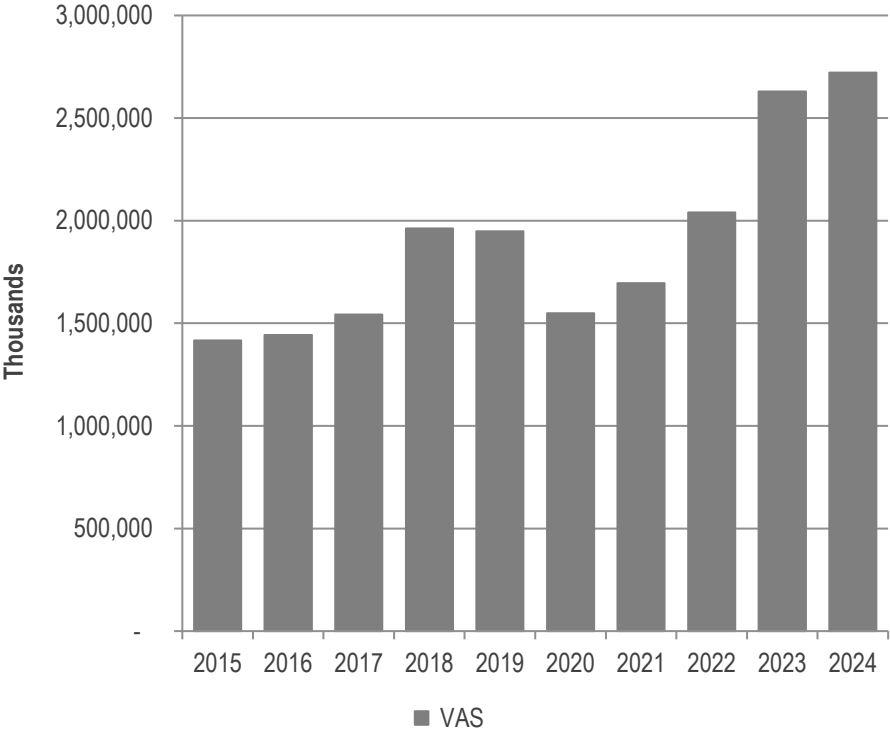
Linamar Has a Very Strong Balance Sheet



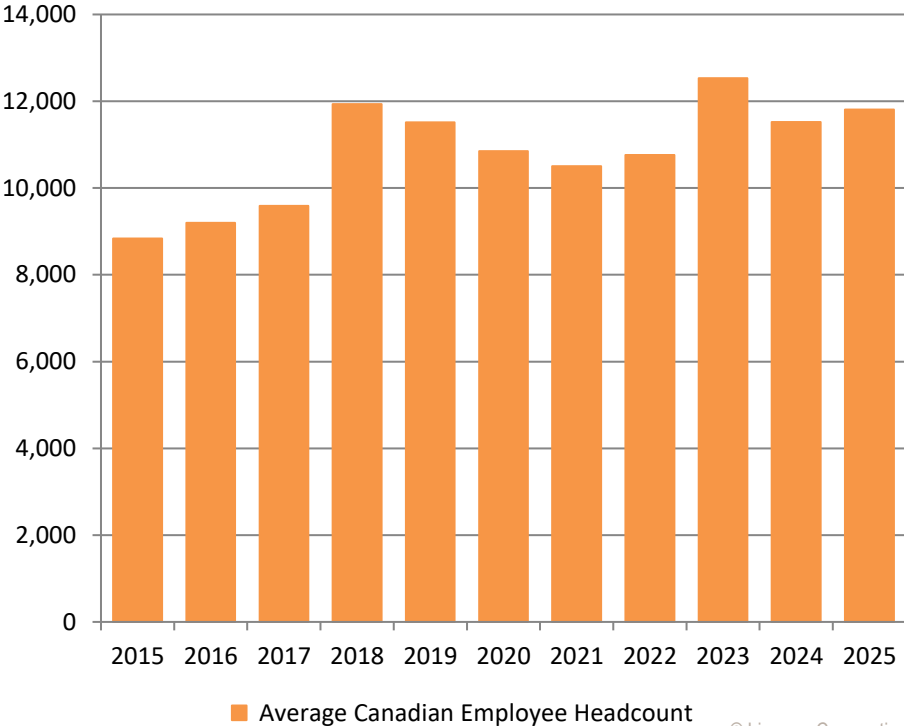
1 - EBITDA includes trailing twelve months EBITDA on acquisitions, when applicable. 2020 Net Debt to EBITDA was restated in Q1 2021.

Canadian Facilities

Value Added Sales of Linamar Canadian Facilities

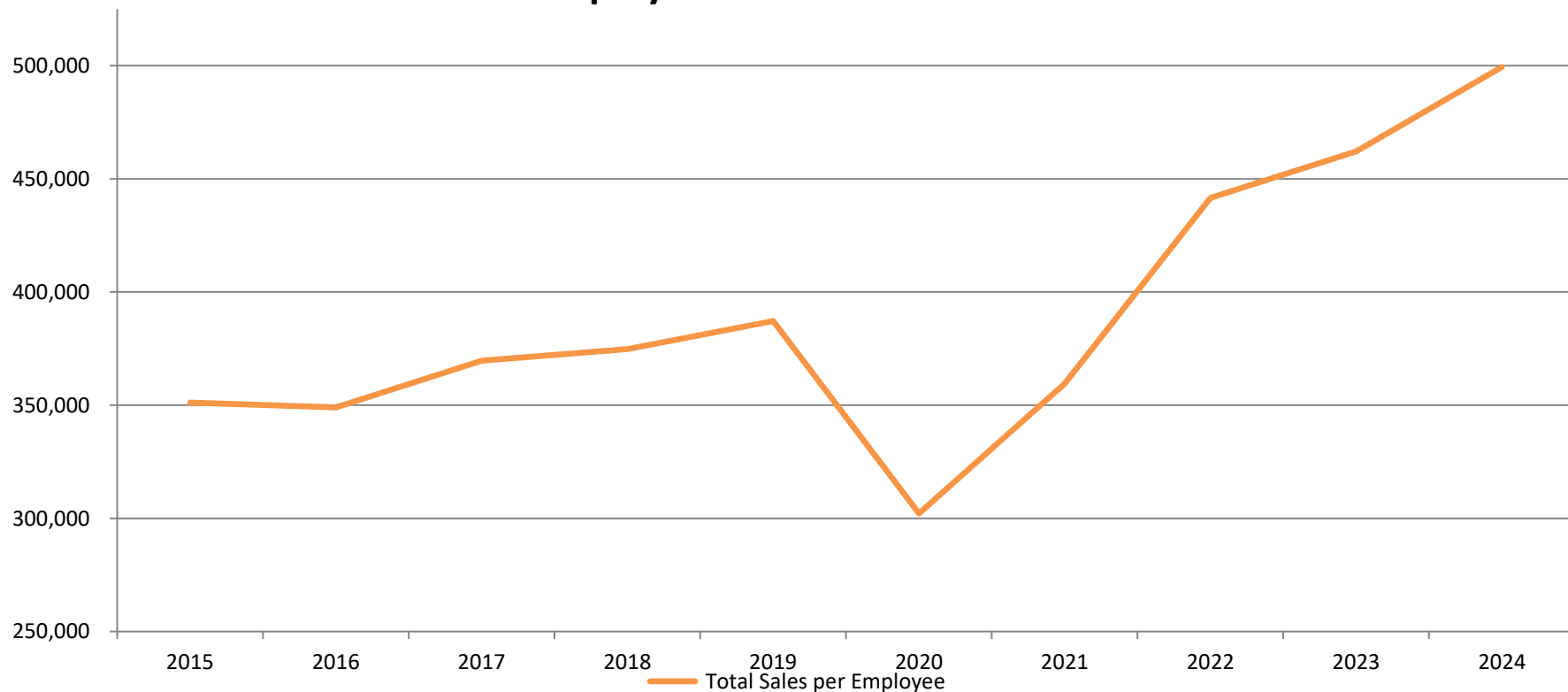


Average Canadian Employee Headcount

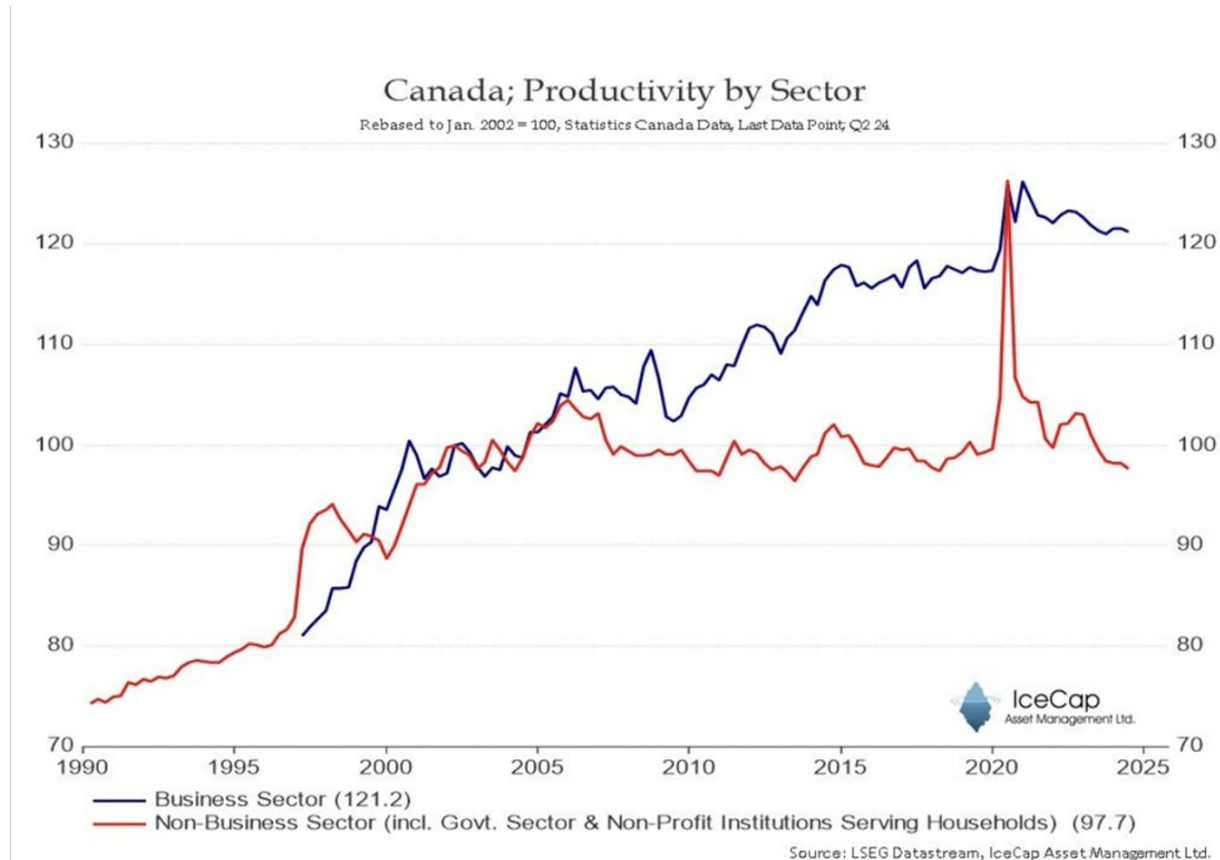


Strong Productivity Growth in Canadian Facilities

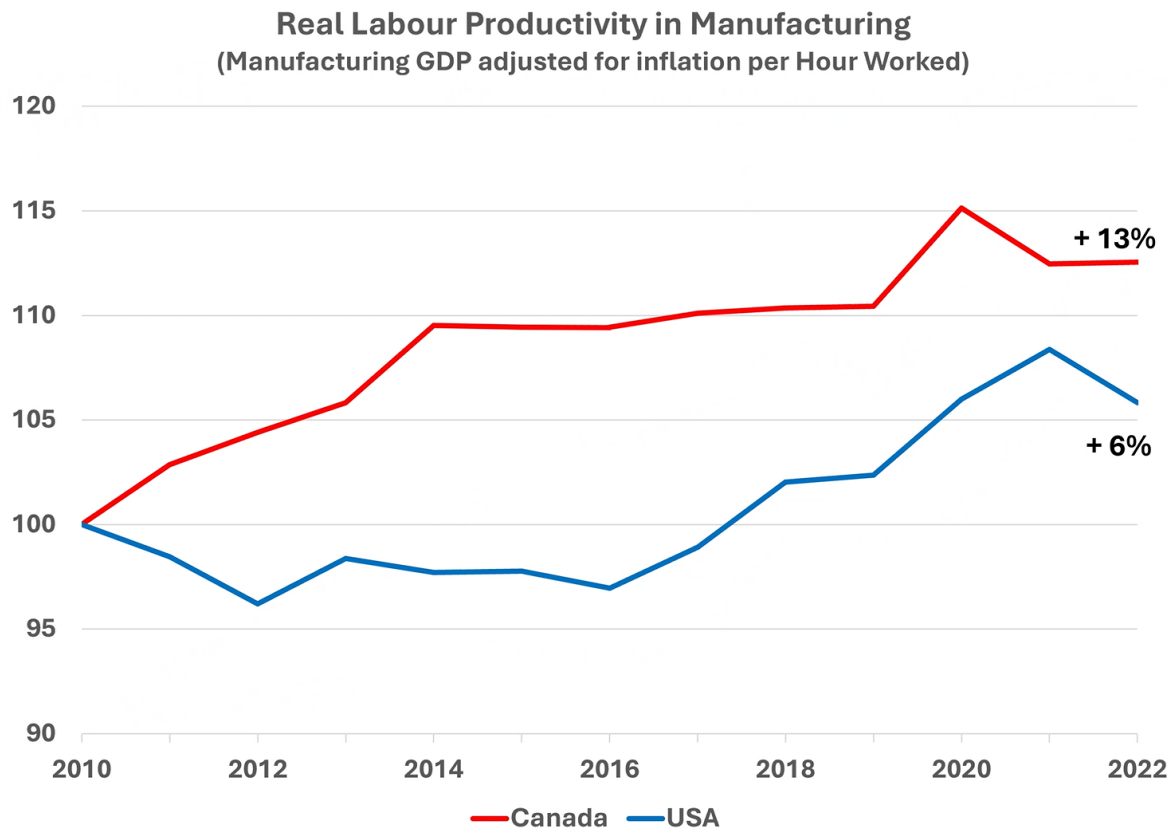
Sales Per Employee – Linamar Canadian Facilities



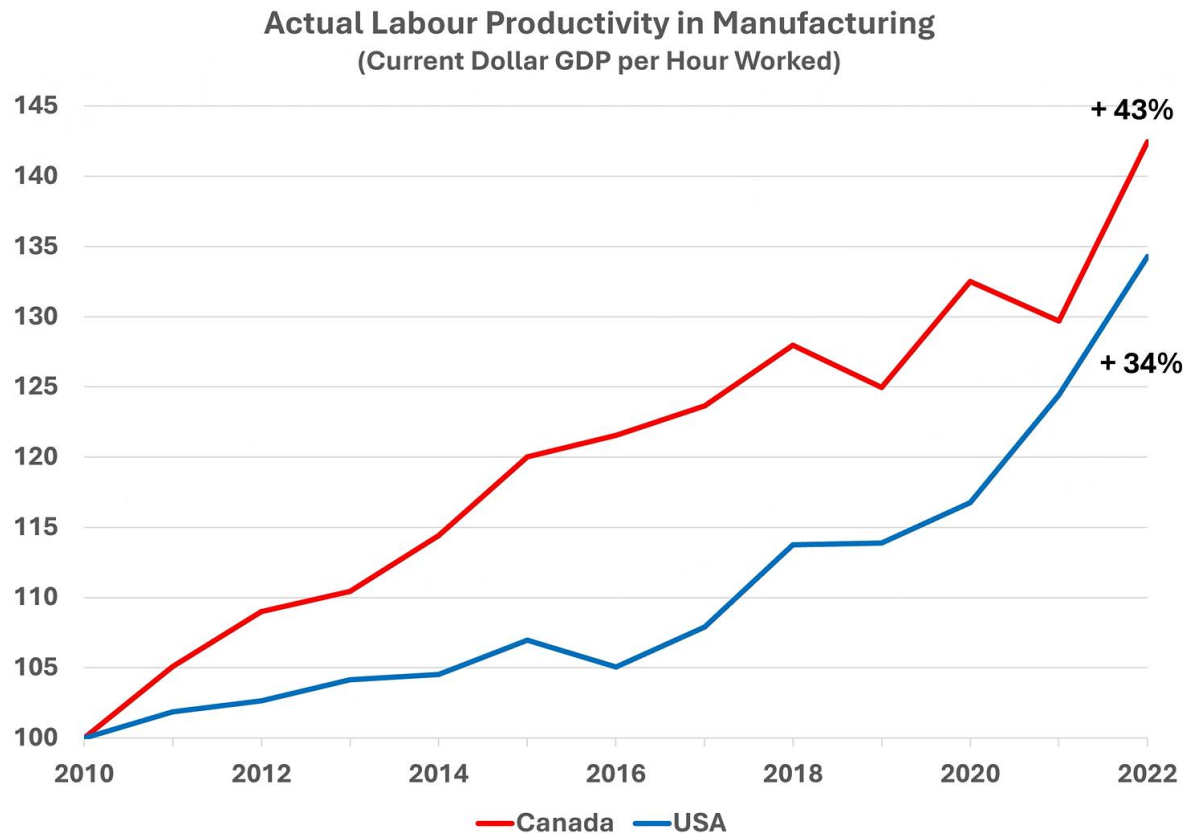
Productivity in Canada Growing in Business Sector



Canadian Productivity Ahead of US



Canadian Productivity Ahead of US



Strategy



Linamar's Powerful Balanced & Diversified Business Model

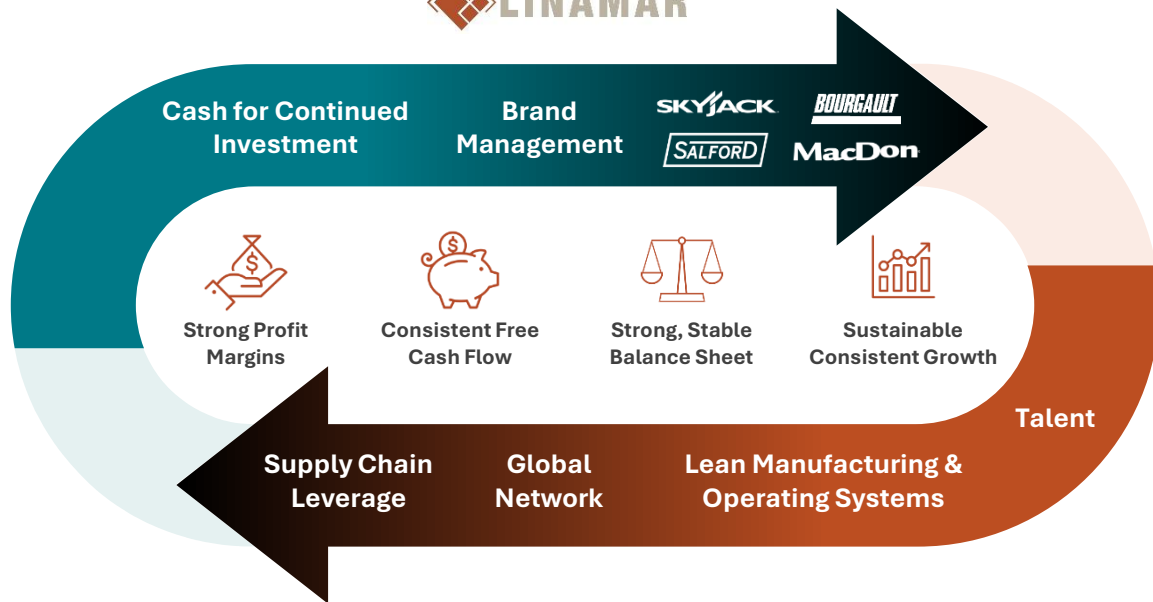


INDUSTRIAL SEGMENT

focused on North America, generates cash and shares brand management knowledge.

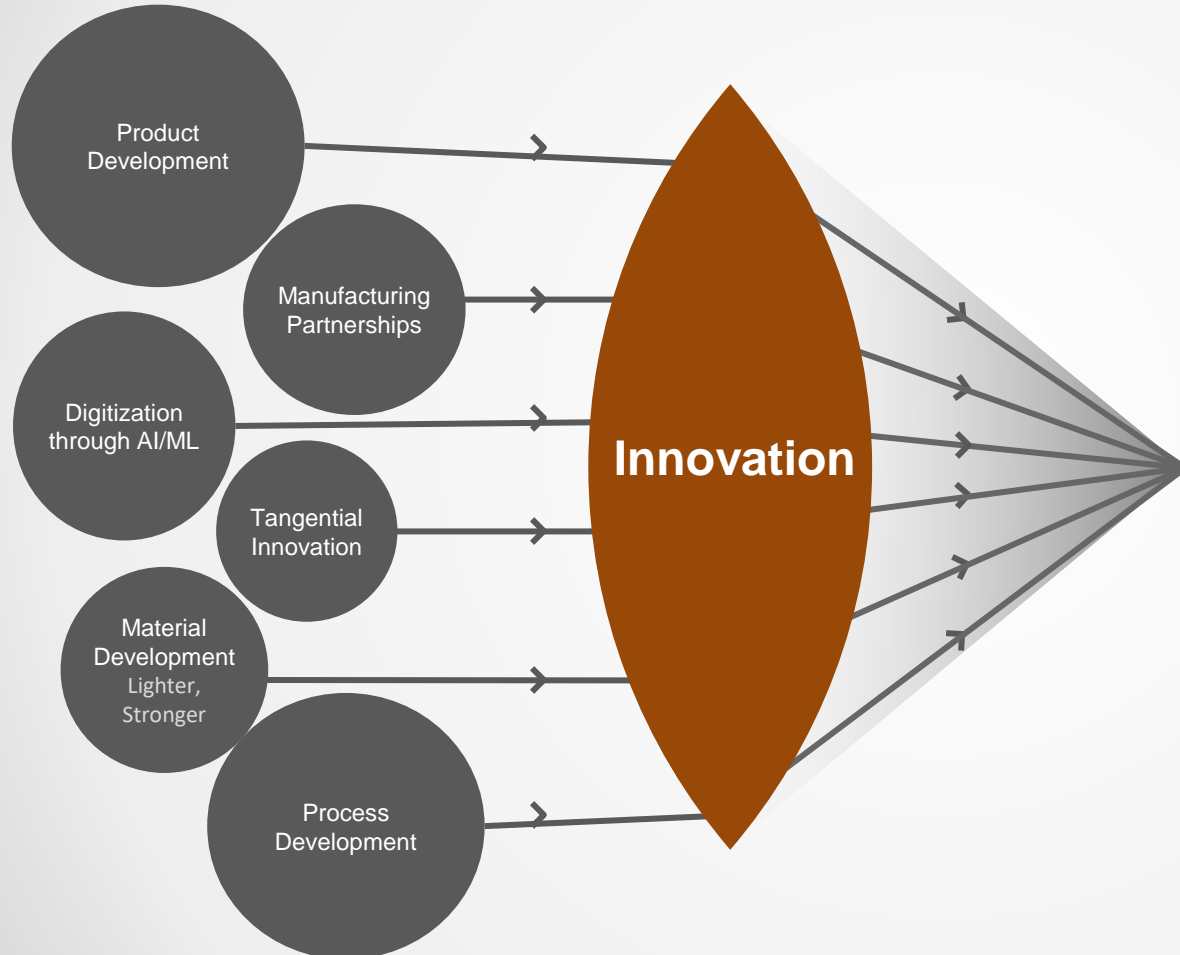
MOBILITY SEGMENT

with its global reach and advanced capabilities, supports the Industrial segment by providing expertise and resources.



This **synergistic model** drives consistent growth, positive cash flow, and a strong balance sheet.

Broad Innovation Strategy



Linamar's Long Term Sustainability Roadmap & Goals



We commit to being a net zero emissions organization inclusive of the operation of our facilities, our supply base and the products we supply to by 2050.

Our Goal:



Net zero emissions
by **2050**

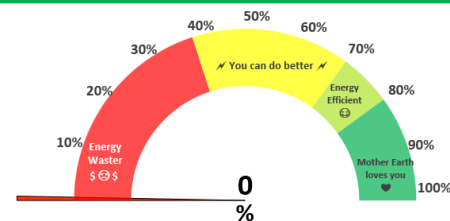
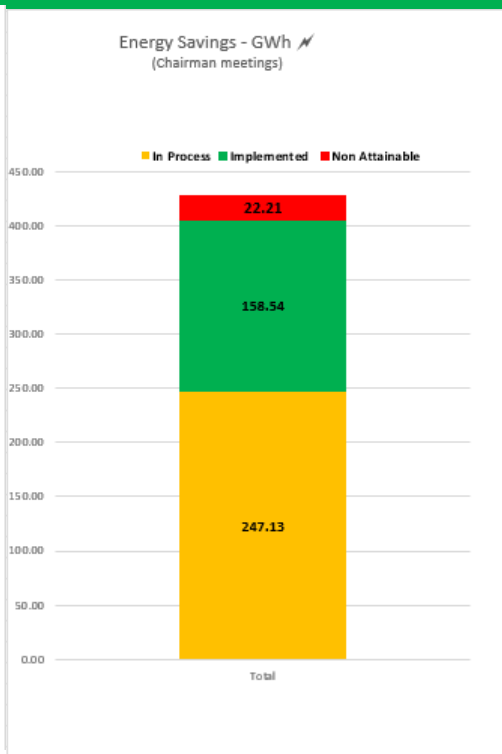
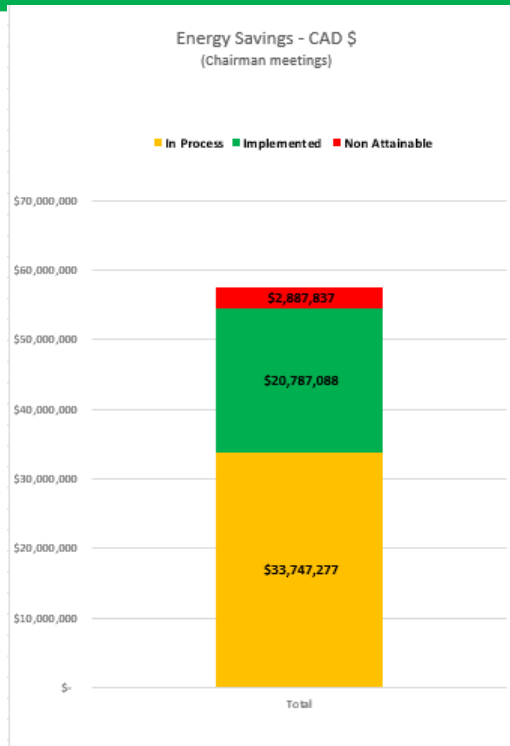
Our Commitment:

Net Zero Facilities
Net Zero Supply Chain
Net Zero Customer Products



Waste Elimination – ⚡Energy Savings⚡ – Cumulative

⚡ 427.88GWh and \$57.4Million CAD Identified ⚡
⚡ 158.54GWh and \$20.8Million CAD Implemented ⚡



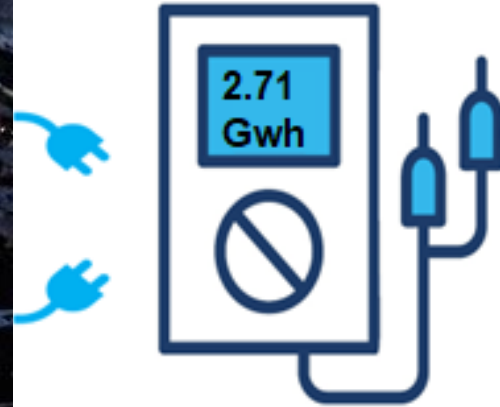
LINAMAR Energy Savings Checklist

Status: 0% Progress

Activity	Applicable	Priority	W/W	Implemented
Operate main compressors at low pressure as possible (80 Psi)				<input type="checkbox"/>
Minimize Compressor Pressure Loss with Use of Zero-Loss Drainage Valve				<input type="checkbox"/>
Optimize Compressor Heat Management				<input type="checkbox"/>
Optimize Compressor Operation with an Oil Specified for Longer Hours of Operation				<input type="checkbox"/>
Reduce Need for Compressed Air				<input type="checkbox"/>
Reduce Oil Water Disposal				<input type="checkbox"/>
Shift to Electric Available or (if not Economical) Ensure Propane Units run on Eco Mode				<input type="checkbox"/>
LED Lighting / SMART LED metering programs				<input type="checkbox"/>
Power Factor Correction				<input type="checkbox"/>
Run Washers at Ambient Temperature				<input type="checkbox"/>
Minimize Parts Conveyor Energy Usage				<input type="checkbox"/>
Minimize Machine Oil Conveyor Energy Usage				<input type="checkbox"/>
Minimize Mist Collector Energy Usage				<input type="checkbox"/>
Minimize Machine Energy Drive (when not in Use in Breaks, Lunch, Weekends)				<input type="checkbox"/>
(If launching - did you refer to the E.E. Questionnaire (input/projects)?				<input type="checkbox"/>
Increasing the ratio of secondary alloys in casting process				<input type="checkbox"/>

What does 425 GWh Look Like?

- The average Ontario household uses about 9,500 kWh of electricity per year
- Power approximately 45,000 homes for 1 year



Business Environment



Impact to Linamar

Steel & Aluminum

- Minimal direct impact to Linamar in both mobility and industrial businesses
- Will weigh on automakers and ultimately increase vehicle prices dampening demand and production

Vehicle Tariffs

- No direct impact to Linamar
- Will weigh on automakers and ultimately increase vehicle prices dampening demand and production

Automotive Parts Tariffs

- Minimal impact on Linamar
 - No direct impact on Linamar for our shipments as customers are importers of record and pay tariffs
 - No impact for our customers for Canada and Mexico product shipping to US that is USMCA compliant
 - No impact from foreign parts supply as we in general do not supply the US from outside of NA
 - Minimal supply chain impact for parts imported into US from outside NA for further processing in our facilities
- OEM customers buying offshore are paying a premium and looking to resource those parts, creating an opportunity for Linamar as a NA source

International Tariffs

- Minimal impact to Linamar as we ship very little product from Europe or Asia to the U.S.

Retaliatory Tariffs

- Canadian retaliatory tariffs paused for manufacturers, no impact currently
- Evaluating impact of retaliatory tariffs from other countries on a case-by-case basis as they are imposed

Key Summary:

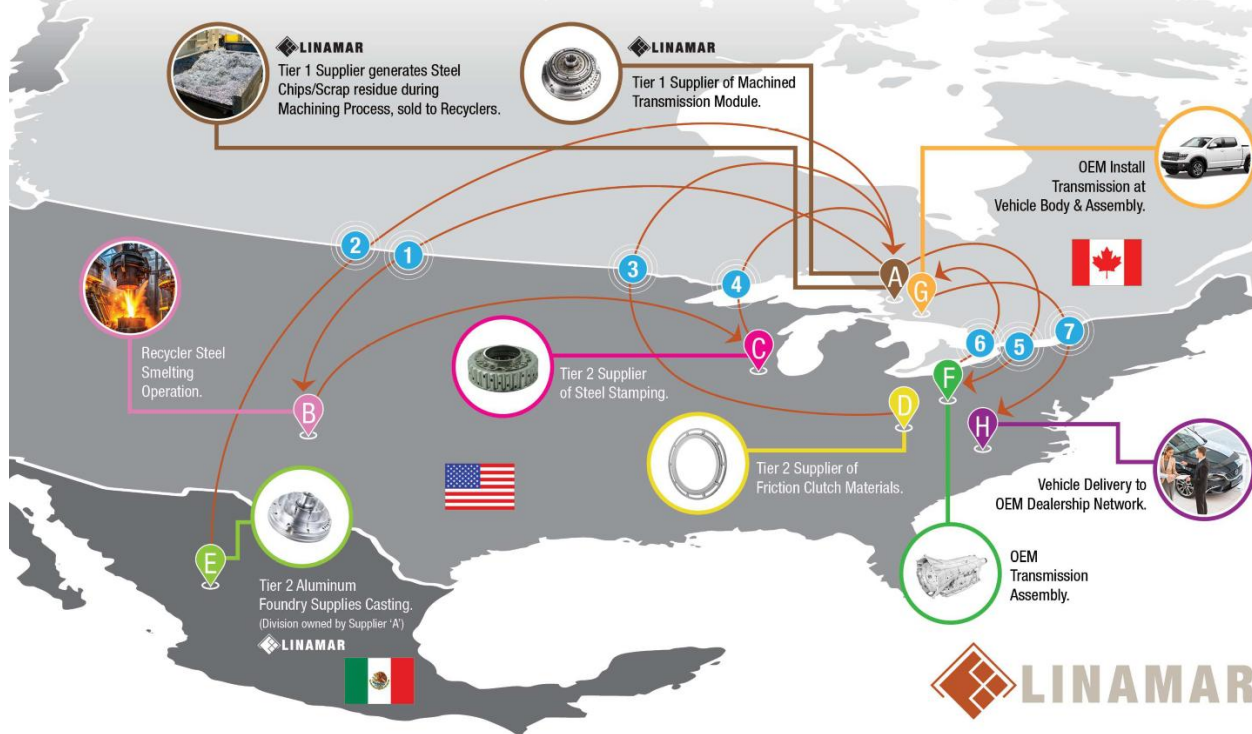
- *Currently minimal bottom line impact to Linamar as a result of tariffs*
- *Risk of production declines as metal and vehicle tariffs take their toll on automakers*
- *Seeing opportunity as automakers on shore parts supply over next 3 years*

Highly Integrated Supply Chain

Unsustainable Cost Escalation to Add Tariffs at Each Crossing

North American Automotive Supply Chain Integration

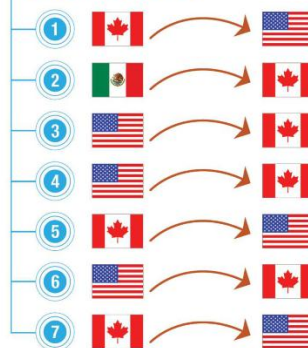
Illustrative Example



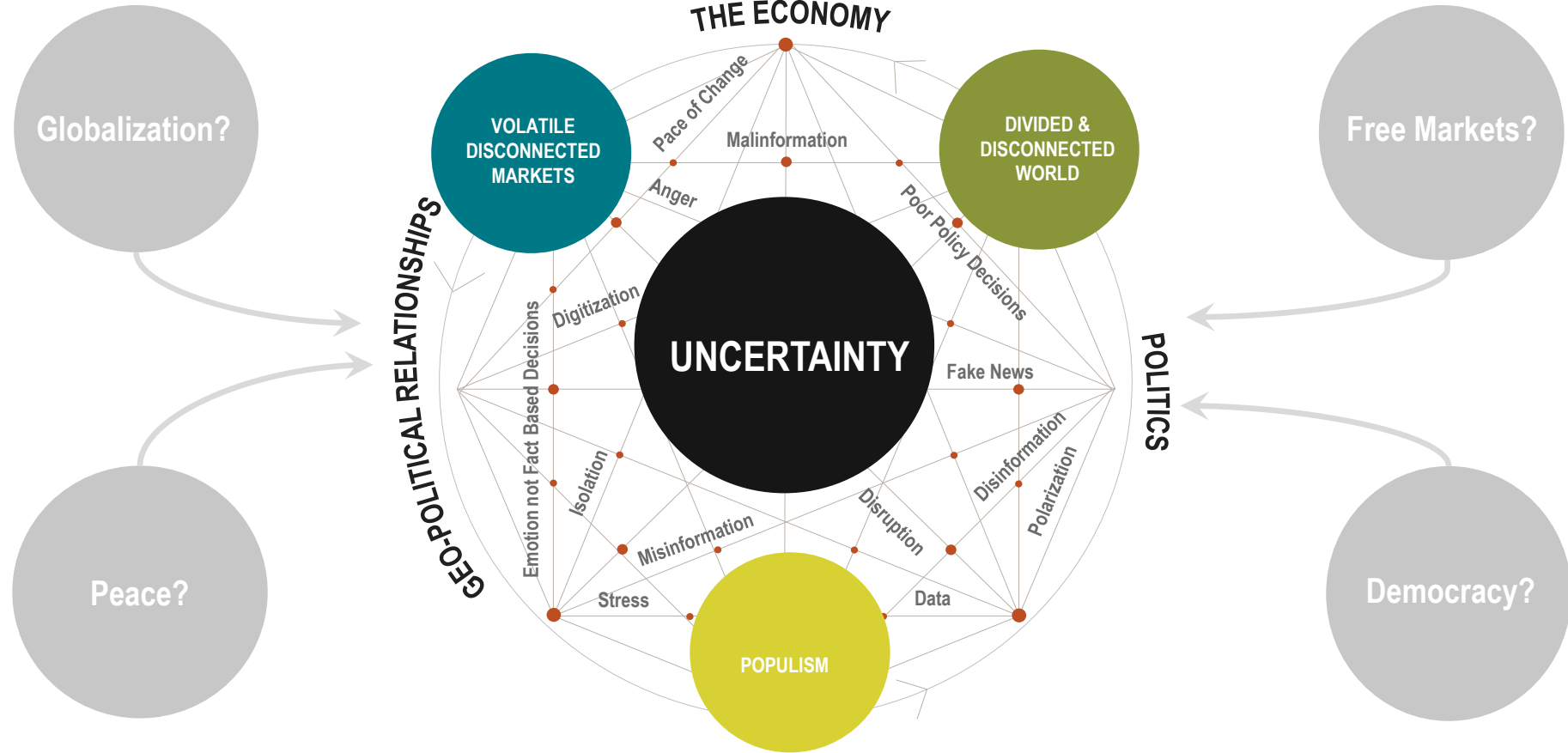
SUPPLY CHAIN STEPS

- A** Tier 1 Supplier generates Steel Chips/Scrap residue during Machining Process, sold to Recyclers.
- B** US Steel Recycler Smelting Operation.
- C** Tier 2 Supplier of Steel Stamping.
- D** Tier 2 Supplier of Friction Clutch Materials.
- E** Tier 2 Aluminum Foundry Supplies Casting. (Division owned by Supplier 'A')
- A** Tier 1 Supplier of Machined Transmission Module.
- F** OEM Transmission Assembly.
- G** OEM Install Transmission at Vehicle Body & Assembly.
- H** Vehicle Delivery to OEM Dealership Network.

BORDER CROSSINGS



Challenges to Political Economy Driving Uncertainty... and Opportunity



We have more information available to us than ever in history, but we are less informed than we have ever been.

Challenges to Political Economy Driving Uncertainty... and Opportunity

Uncertainty

OPPORTUNITY

Companies Who Will Win In Challenging Times



**Flexible and
Nimble**



**Technically
Strong and
Devoted to
Innovation**



**Financially
Strong to Invest
in Capital, R&D
and Automation**



**Commercially
Astute**



Thank You

www.linamar.com

